



MARRIOTT
BUDAPEST

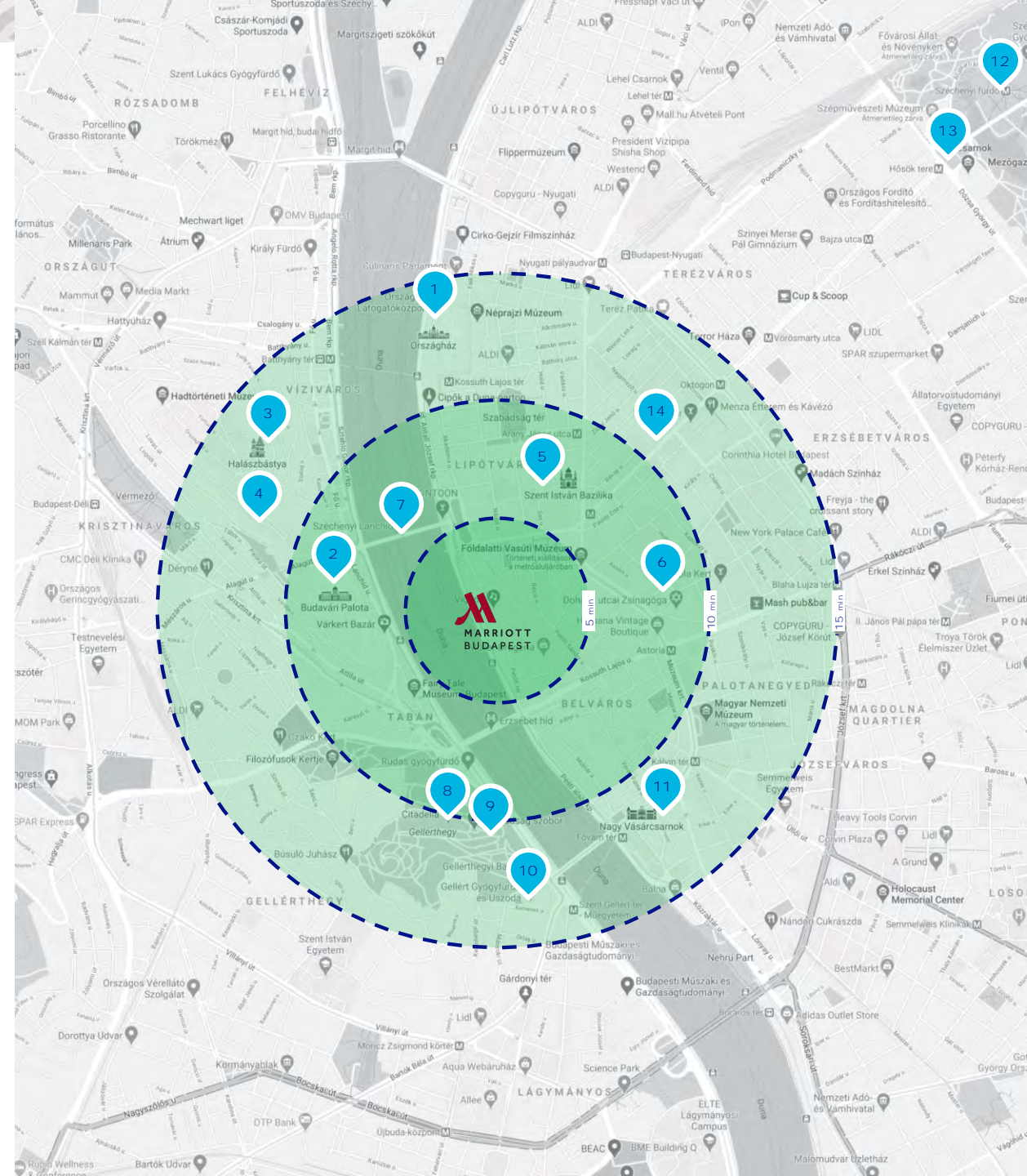
“ICONIC BEYOND THE VIEW”

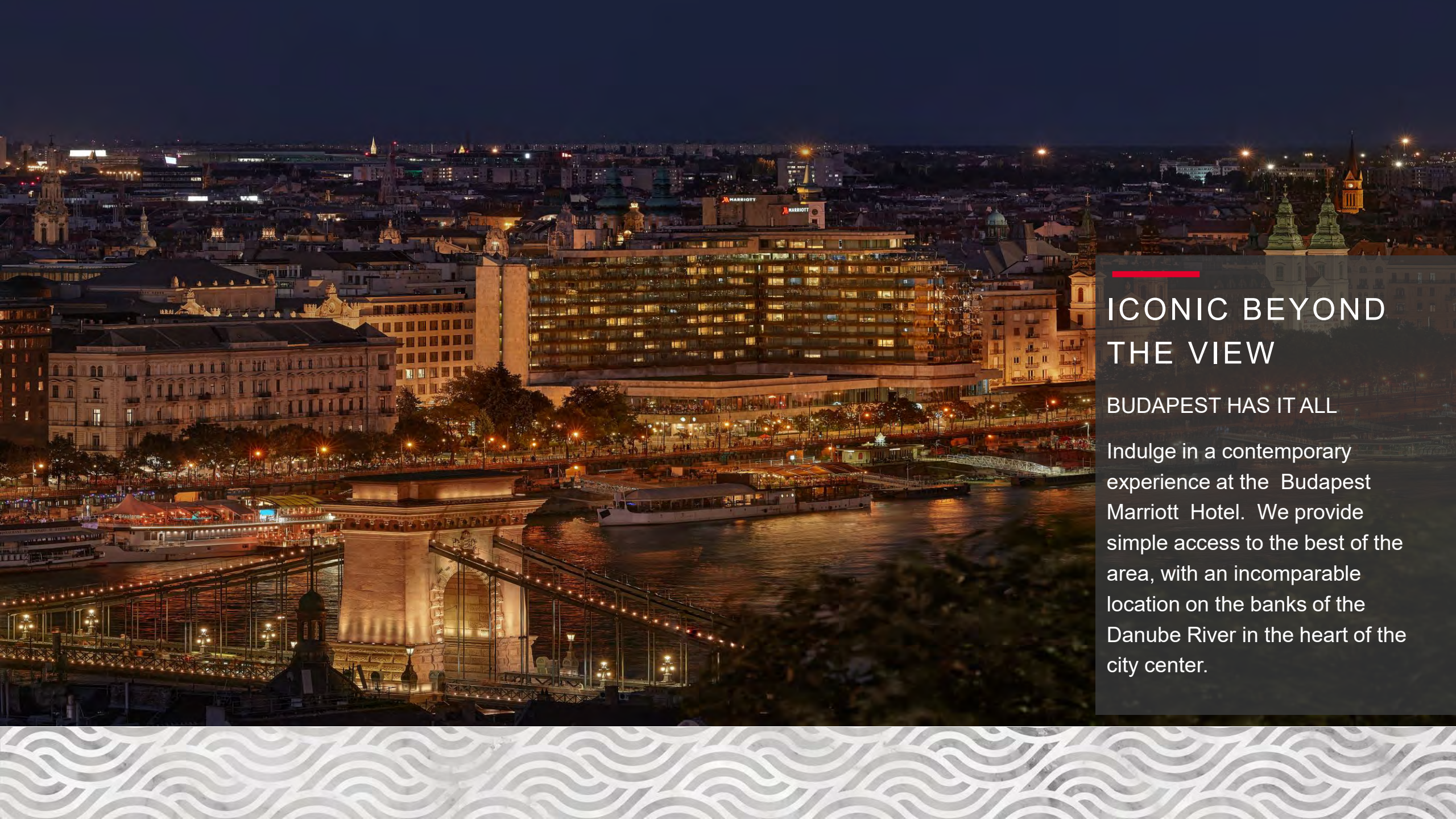


PRIME LOCATION

The Budapest Marriott Hotel is located on the Danube Promenade within walking distance of the city's major sights including the Chain Bridge, Fashion street, St. Stephen's Basilica, Parliament, Great Market Hall, Citadel and thermal baths.

- 
1. Parliament
 2. Buda Castle
 3. Fisherman's Basiton
 4. Matthias Church
 5. St Stephen's Basilica
 6. Grand Synagogue
 7. Chain Bridge
 8. Citadel
 9. Liberty Statue
 10. Gellért Bath
 11. Great Market Hall
 12. Széchenyi Bath
 13. Heroes' Square
 14. Hungarian State Opera House

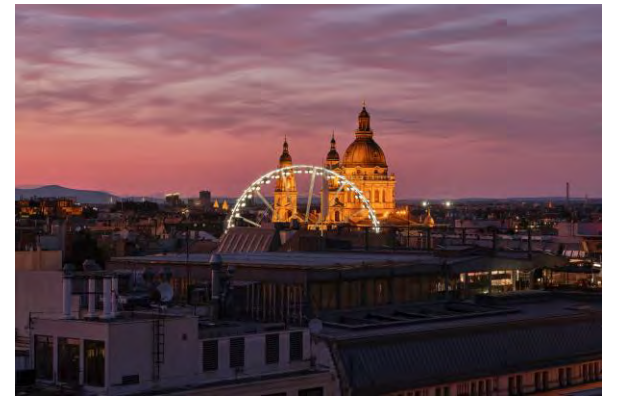




ICONIC BEYOND THE VIEW

BUDAPEST HAS IT ALL

Indulge in a contemporary experience at the Budapest Marriott Hotel. We provide simple access to the best of the area, with an incomparable location on the banks of the Danube River in the heart of the city center.



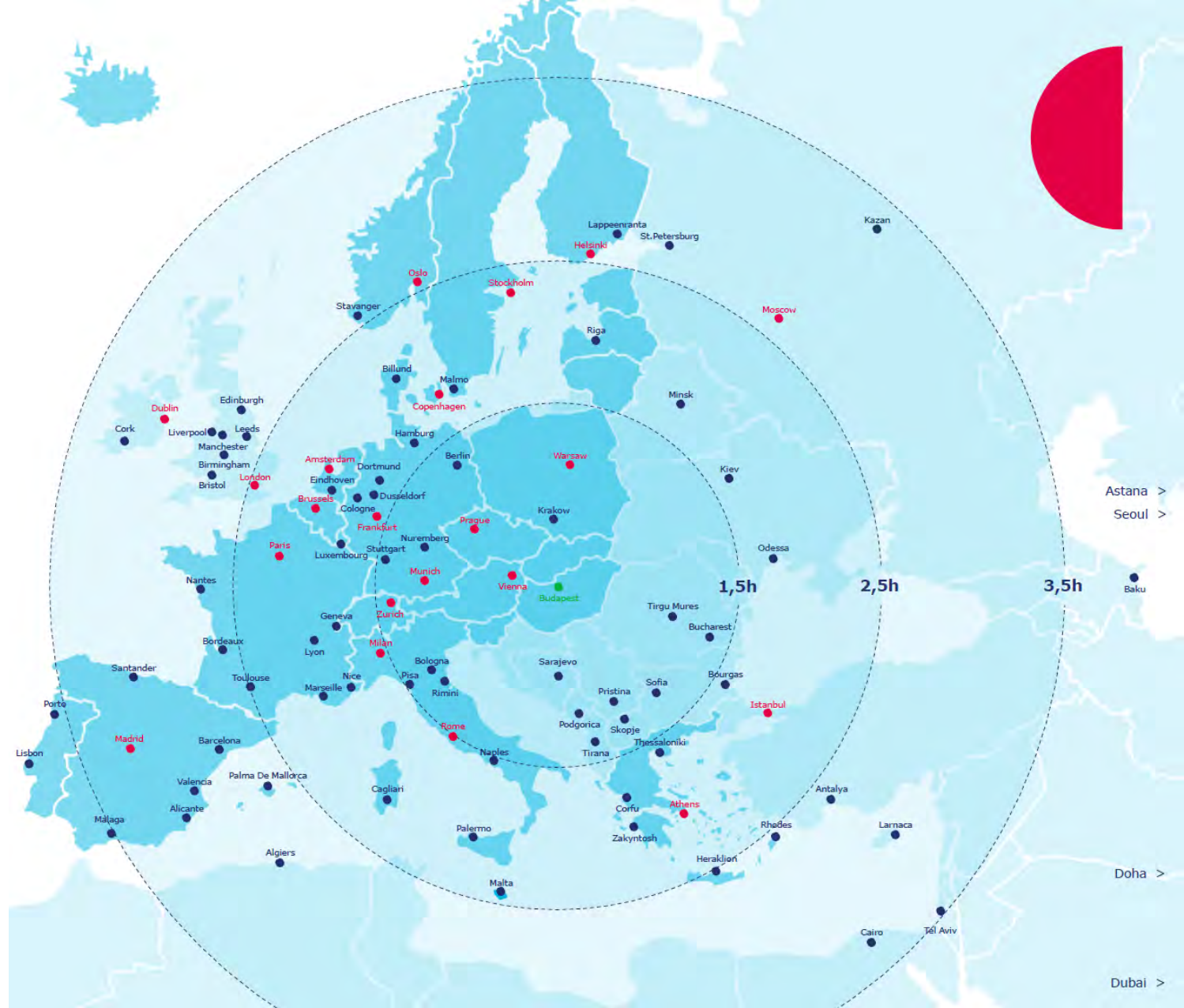
BUDAPEST IS HOME TO STUNNING WORLD HERITAGE SITES, SHOWCASING ITS RICH HISTORY, ARCHITECTURAL BEAUTY, AND CULTURAL HERITAGE.



ACCESSIBILITY BY AIR

DIRECT CONNECTIONS

- 140 destinations
- 129 cities
- 44 countries
- 42 airlines



ACCESSIBILITY BY RAIL

DIRECT CONNECTIONS TO 50+ DESTINATIONS

EU SCHENGEN AREA MEMBER

3 MAIN INTERNATIONAL RAILWAY STATIONS
IN BUDAPEST

- Budapest Keleti Railway Station
- Budapest Nyugati Railway Station
- Budapest Déli Railway Station





GREATROOM





DELUXE ROOM

ROOM FACTS

Total number of rooms: 364

Guest rooms: 342

Suites: 22

Deluxe rooms (30 sqm): 278

Twin rooms (30 sqm): 114

Connecting rooms: 52

Executive rooms (30 sqm): 64

Corner studio (37 sqm): 8

Executive suite (65 sqm): 8

Junior suite (43 sqm): 5

Presidential suite (146 sqm): 1



DELUXE ROOM

STUNNING VIEW

Enjoy the comfort of our modern, spacious rooms with a standard size of 30 sqm (330 sq ft) in Deluxe rooms.

All of our rooms offer a stunning Danube River view.



EXECUTIVE SUITE





PRESIDENTIAL SUITE





BUDA CASTLE AND DANUBE RIVER VIEW





GELLERT HILL AND ELIZABETH BRIDGE VIEW





LIZ & CHAIN ROOFTOP BAR

- Rooftop bar on the 9th floor overlooking the beauties of Budapest
- Open all year long for the public
- Available for private events





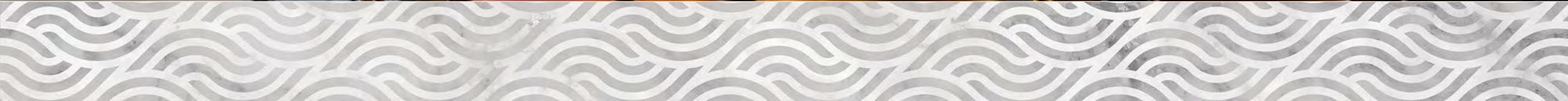
LIZ & CHAIN ROOFTOP BAR





DNB BUDAPEST RESTAURANT

- Locally sourced ingredients and regional flavors from the Black Forest to the Black Sea
- Stunning views of the Danube
- Capacity up to 172 guests
- Panoramic terrace
- Welcomes groups in a warm, inviting atmosphere





M CLUB LOUNGE





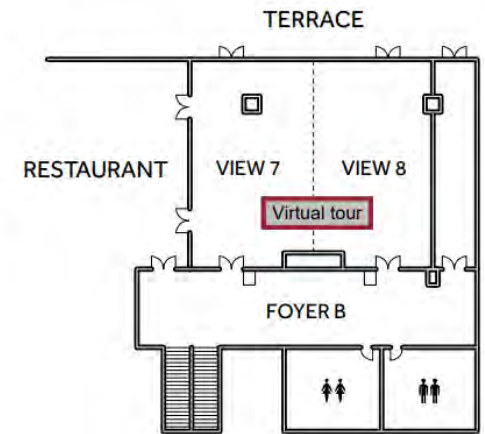
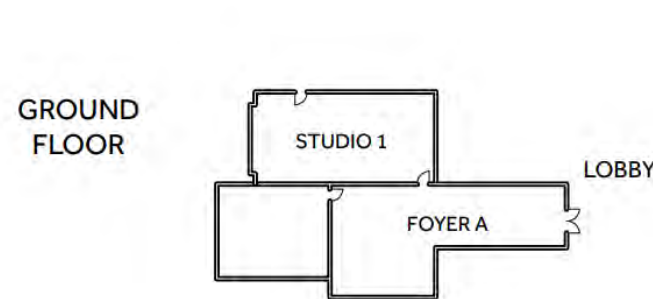
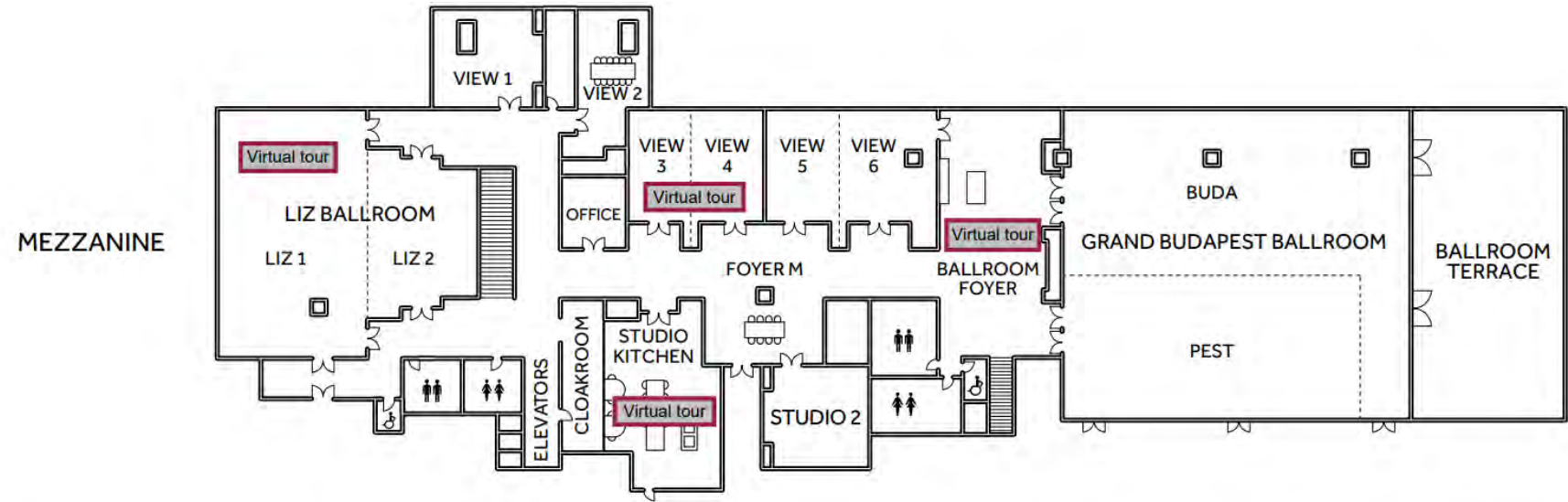
MARRIOTT FITNESS CENTER

- Magnificent view over the Buda hills
- Services:
 - gym
 - massage treatments
 - jacuzzi, steam bath and sauna
 - personal training
 - group fitness



EVENT FACILITIES

- One of the city's largest hotel-based event venues
- Most of the meeting rooms feature natural daylight and breathtaking Danube River views
- 16 well-designed event rooms
- 1,600 sqm (17,200 sq ft) of total meeting space
- Grand Budapest ballroom for up to 650 people
- Flexible break-out rooms and extended exhibition area



NAME	NATURAL DAYLIGHT	SQUARE METER / SQUARE FEET	LENGTH x WIDTH x HEIGHT (METER)	CAPACITY IN THEATRE	CAPACITY IN CLASSROOM	CAPACITY U-SHAPE	CAPACITY IN BOARDROOM	CAPACITY IN HOLLOW SQUARE	CAPACITY IN CABARET STYLE	CAPACITY IN BANQUET	CAPACITY IN RECEPTION
MEZZANINE											
Grand Budapest Ballroom	YES	614 / 6609	25.5x24x3,3	650	350	78	72	102	270	450	600
Buda	YES	306 / 3294	25.5x12x3.3	380	165	72	75	75	150	220	300
Pest	YES	248 / 2670	22.5x11x3.3	250	150	63	69	69	120	200	250
Ballroom Terrace	YES	190 / 2045	21x9	120	-	-	-	-	-	-	200
Ballroom foyer	YES	140 / 1507	7.5x18.5x3.3	-	-	-	-	-	-	-	150
Liz Ballroom (Liz 1 + 2)	YES	360 / 3875	-	350	150	65	70	70	144	240	300
Liz 1	YES	265 / 2852,5	18.2x14.5x4.5	250	120	50	55	55	108	180	200
Liz 2	NO	95 / 1022,5	11.5x8.3x4.5	70	48	30	30	36	36	60	80
View 5+6	YES	114 / 1227	8.8x13x3.1	100	50	30	36	36	36	60	80
View 6	YES	67 / 721	8.8x7.5x3.1	50	24	22	26	26	18	30	40
View 5	YES	47 / 506	8.8x5.4x3.1	50	24	22	26	26	12	20	40
View 3+4	YES	90 / 969	8.8x10.3x3.1	100	50	30	36	36	36	60	80
View 4	YES	46 / 495	8.8x5.3x3.1	50	24	22	26	26	12	20	40
View 3	YES	44 / 374	8.8x5x3.1	50	24	22	26	26	12	20	40
View 2	YES	29 / 312	4.2x6.9x3.1	-	-	-	12	-	-	-	-
View 1	YES	56 / 603	7x8x3.1	24	28	15	14	20	24	30	40
Foyer M	NO	112 / 1206	11.4x9.1x3.3	-	-	-	-	-	-	-	120
Office	NO	20 / 215	4.2x4.8x3.1	15	10	12	10	14	6	12	-
Studio Kitchen	NO	71 / 807	-	-	-	-	16	-	-	-	-
Studio 2	NO	49 / 527	7.7x6.4x3.1	40	36	32	26	40	24	30	40
GROUND FLOOR											
View 7+8	YES	182 / 1959	12.5x14.5x3.3	140	80	50	60	60	78	130	180
View 8	YES	91.5 / 985	12.5x7.3x3.3	70	54	36	40	42	42	78	90
View 7	YES	91.5 / 985	12.5x7.3x3.3	70	40	30	30	36	30	60	80
Foyer B	NO	88 / 947	21x4.2	-	-	-	-	-	-	-	60
Studio 1	YES	36 / 388	4.5x8x2.9	30	30	27	28	30	24	48	30
Foyer A	NO	37 / 398	4.4x6.5 & 3.5x2.3	-	-	-	-	-	-	-	25





GRAND BUDAPEST BALLROOM

- Meeting area of 614 sqm (6,610 sq ft)
- 650 people theatre style
- 450 people banquet style
- 270 people cabaret style
- Outdoor terrace
- Natural daylight and magnificent view over the Danube River, the Buda Hills, Royal Palace, and the Chain Bridge





GRAND BUDAPEST BALLROOM TERRACE





BALLROOM FOYER





LIZ BALLROOM

- Meeting area of 360 sqm (3,875 sq ft)
- 350 people theatre style
- 240 people banquet style
- 144 people cabaret style
- Natural daylight and magnificent view over the Danube River and the Elizabeth Bridge



STUDIO KITCHEN





VIEW 7-8 EVENT ROOMS

- Meeting area of 182 sqm (1,960 sq feet)
- 140 people theater style
- 130 people banquet style
- 78 people cabaret / classroom
- Natural daylight and terrace with a magnificent view over the Buda Castle and the Danube River



VIEW 1 MEETING ROOM



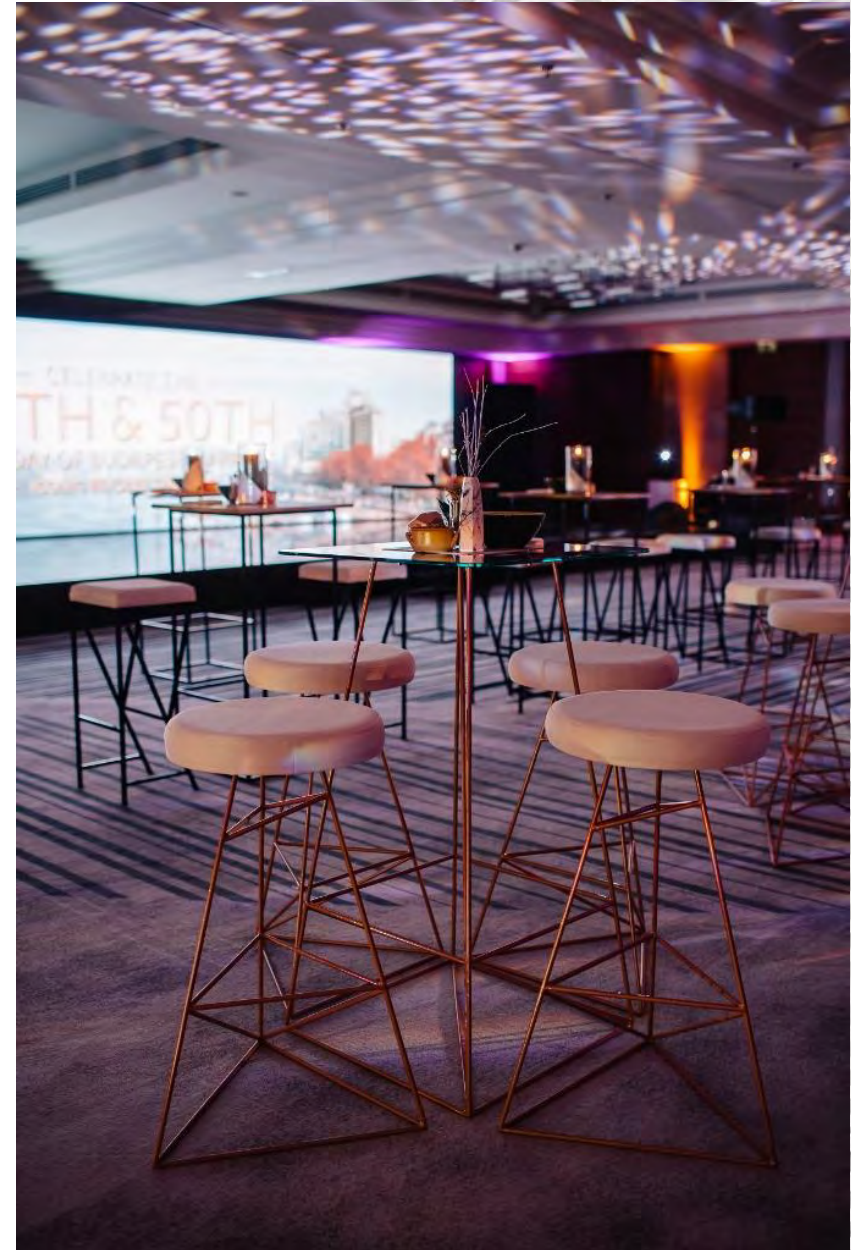
MARRIOTT BONVOY™ EVENTS

Where will your event take you?

Events should always be enriching whether you are attending or planning them. That's why planners enrolled in Marriott Bonvoy earn points on both social and business bookings, accessing exclusive offers and discounts.

Discover more with MARRIOTT BONVOY EVENTS.

Click [here](#) or scan the QR code to enroll:



GREEN KEY CERTIFICATE

The Budapest Marriott Hotel proudly holds the Green Key certification as the first hotel in Budapest, since 2022.

Green Key is a prestigious acknowledgment signifying our dedication to meeting the rigorous standards established by the Foundation for Environmental Education.

This recognition underscores our ongoing initiatives to foster a sustainable and socially responsible business environment.





E-mail: groups.budapest@marriott.com
Phone: +36 1 235 4809

